

# CLEMENS CENTER – MANDEVILLE HALL

## TECHNICAL SPECIFICATIONS

For Information, call 607.733.5639 and follow voice prompts for "Rentals"

### **ROOM DIMENSIONS:**

- ❑ 47' X 52' X 19' (lighting grid)
- ❑ 3' high oak chair rail surrounds room (disguised edison outlets spaced at 2' intervals)
- ❑ Stage entrances possible from four (4) corners of room
- ❑ Floor comprised of masonite over plywood (2 layers), 2X4 s and 2" isolation pads
- ❑ West wall contains 9'04" (w) X 12'0" (h) rolling loading door

### **EQUIPMENT:**

- ❑ Wenger Upper Deck Audience Seating system (Proscenium and Thrust configuration's available)
- ❑ 160 Wenger portable Audience chair  
(Only used with Upper Deck Risers)
- ❑ 34- 2' round Cabaret Tables
- ❑ Chairs for above
- ❑ 12' (w) x 19' (h) White Cyc
- ❑ 6- 6'(w) X 19'(h) black drapes
- ❑ 4 - 12'(w) x 19'(h) black drapes
- ❑ Black/Gray Marley style dance floor available

### **ELECTRICAL INFORMATION:**

- ❑ Lighting Grid: 4' x 5'06" pipe grid (1 1/2" O.D.) covers entire room
- ❑ 264 circuits in grid
- ❑ In-house lighting control comprised of
  - 48 ETC Sensor Dimmers
  - ETC 48/96 Express console with RFU
  - or ETC 48/96 Smartfade

### **LIGHTING INVENTORY:**

- ❑ 16 each of the following:
  - ETC S4 19deg
- ❑ 24 each of the following:
  - ETC S4 36deg
  - ETC S4 26deg
  - ETC S4 Par (4 lens kit)
  - ETC S4 ParNel
- ❑ 18 each of the following:

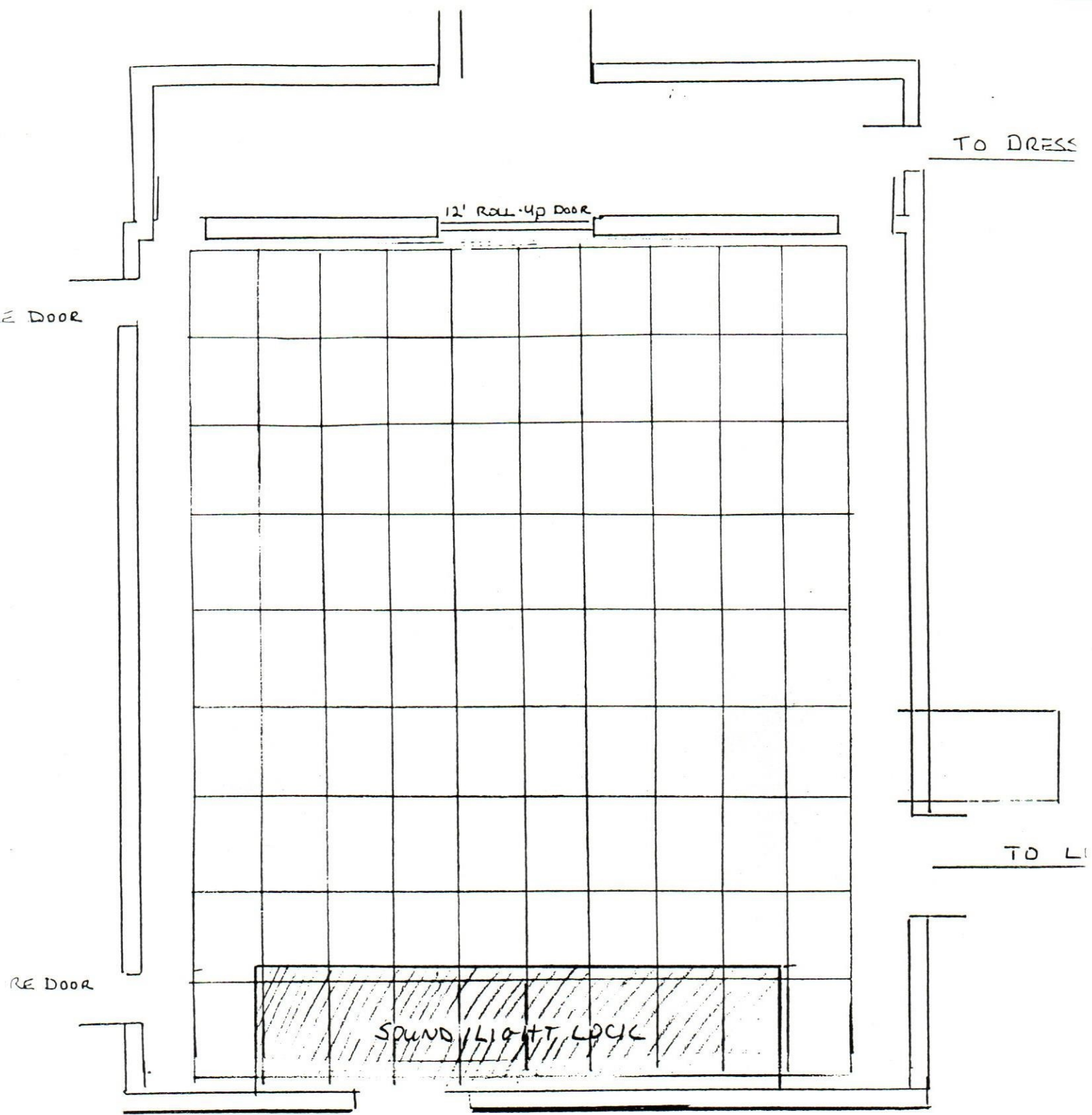
Altman 30- 60 degree ellipsoidal zooms	lenses 4.5" X 6.5", 4.5" X 9"
Altman 25- 50 degree ellipsoidal zooms	lenses 4.5" X 9", 4.5" X 6.5"
Altman 15- 30 degree ellipsoidal zooms	lenses 4.5" X 9", 4.5" X 12"

### **SOUND:**

- ❑ EV Self Powered SxA100 and SxA250 speakers
  - Soundcraft Spirit LX7 16 channel console
  - 4 EV Sx 100+ monitors
  - EQ/ Compression/ CD / Tape Playback
  - Mics./ Cable/ Stands/ Etc.
  - 16 channel snake

### **STORAGE/ LOADING:**

46' x 90'06" storage area parallels west wall, intended primarily for storage of platform and chair dollies.  
Also serves as offstage space for performer entrances.  
Loading doors (9'04" X 12'00") correspond to rolling door into hall.



MANDEVILLE HALL

CLEMENS PERFORMING ARTS CENTER

SCALE:  $\frac{1}{8}'' = 1'$